



NAUTILUS

Rosmond Homes will design a home for you that reflects your style, your personality and your way of life.

Our designers will work diligently to create your individual home, or we can customize a design from our existing portfolio of homes. With Rosmond Homes you can choose everything from your elevation facade to internal layout, fixtures and fittings. It's your home so it's your choice.

With Rosmond Homes you receive exceptional customer service, quality workmanship and honest advice.

Rosmond Homes create designs as individual as you are, so call us today and see how we can turn your dream home into reality for you.



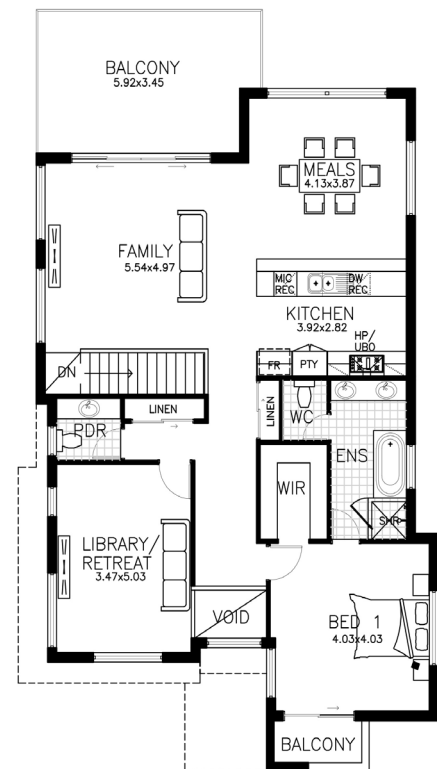
NAUTILUS

The Nautilus is designed with the concept of reverse living space. Downstairs enjoy the enormous theatre room, queen sized bedrooms and generous amenity rooms. Upstairs caters to the luxuries of day to day living with kitchen, meals and family areas overlooking the balcony alfresco. This home is designed beautifully to encapsulate rear views and outlook. The sumptuous master suite is complete with luxurious ensuite, spa bath and enormous WIR.

Ground Floor	145.846m ²	First Floor	134.214m ²		
Garage	40.183m ²	Balcony 1	3.216m ²		
		Balcony 2	19.562m ²	Total	343.031m ²



Ground Floor



First Floor

© This document is copyright and may not be reproduced in part or in its entirety without written permission from the management of Rosmond Homes.