



ALTAVISTA

Rosmond Homes will design a home for you that reflects your style, your personality and your way of life.

Our designers will work diligently to create your individual home, or we can customize a design from our existing portfolio of homes. With Rosmond Homes you can choose everything from your elevation facade to internal layout, fixtures and fittings. It's your home so it's your choice.

With Rosmond Homes you receive exceptional customer service, quality workmanship and honest advice.

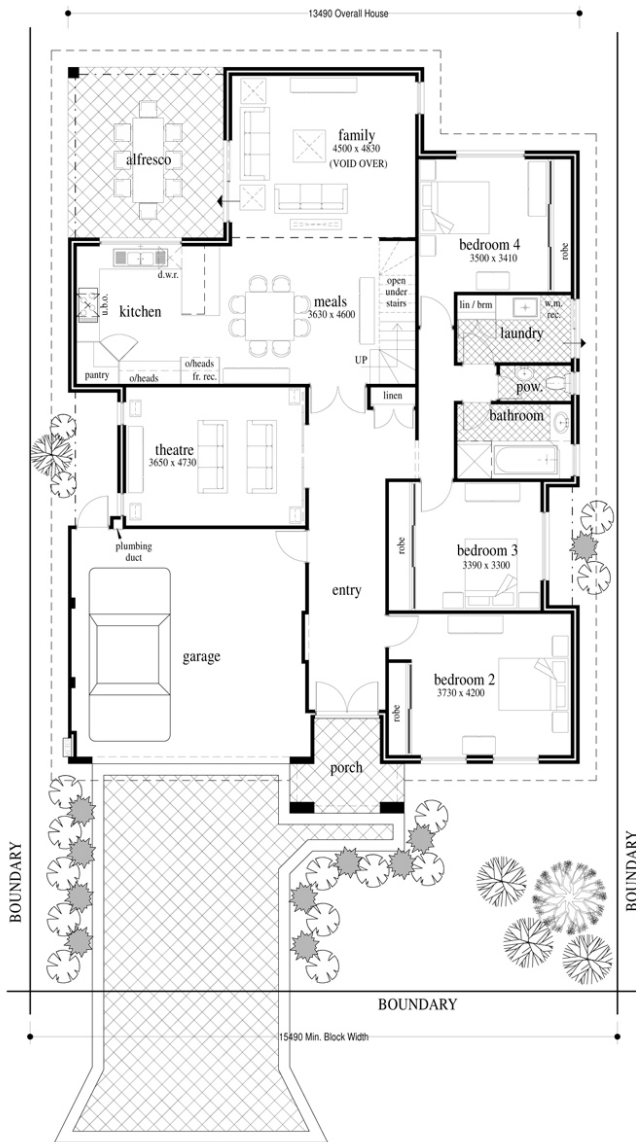
Rosmond Homes create designs as individual as you are, so call us today and see how we can turn your dream home into reality for you.



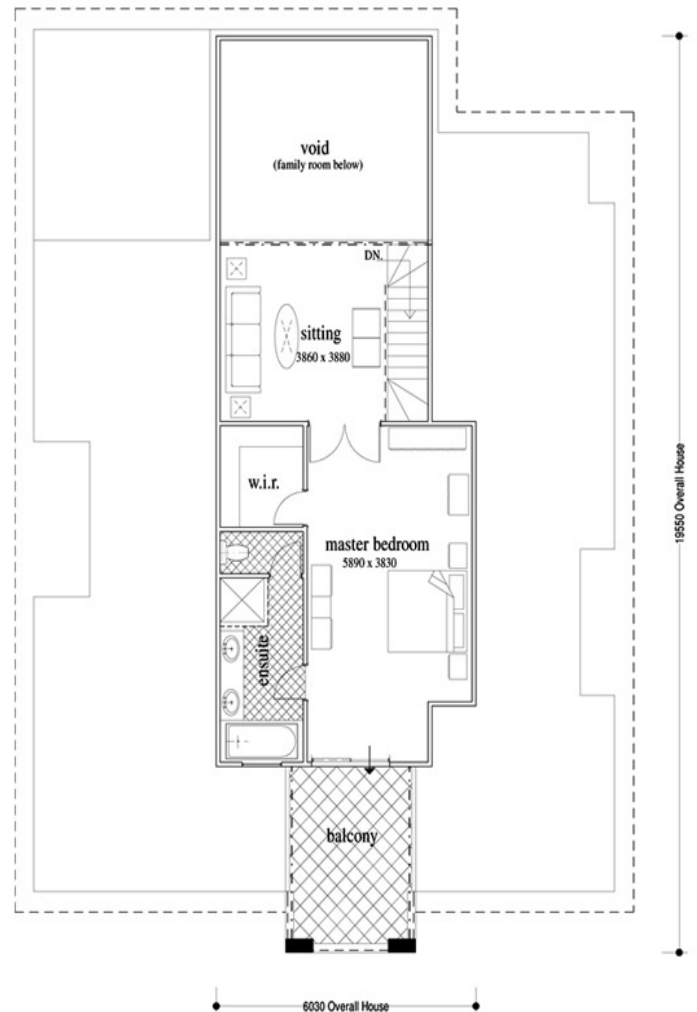
ALTAVISTA

The Altavista is the ultimate in loft style living. With an exceptional layout this home gives the whole family room to really live. The gorgeous double door entry leads into an enormous foyer creating space and style. The magnificent open plan living flows easily into the alfresco area, which is perfect for hosting dinner with friends. Upstairs the sitting room and vaulted ceiling give a spacious feel, while the master suite is something to behold.

Ground Floor	172m ²	Loft	84.04m ²		
Garage	38.83m ²	Balcony 1	11.99m ²		
Porch	6.01m ²	Balcony 2	18.45m ²	Total	331.32m ²



Ground Floor



First Floor

© This document is copyright and may not be reproduced in part or in its entirety without written permission from the management of Rosmond Homes.