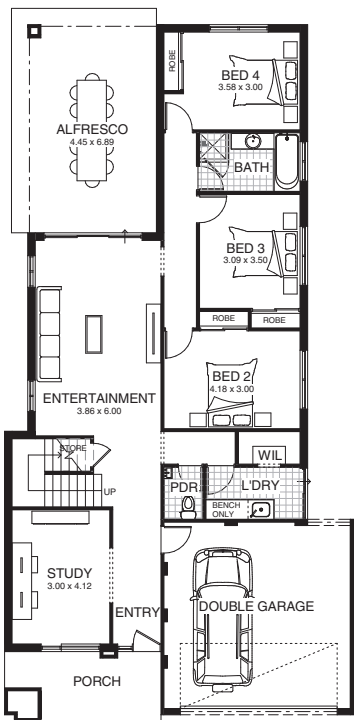


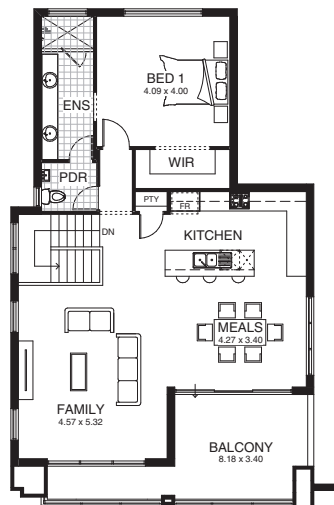
HOUSTON



FLOOR PLAN



ground floor



first floor

The Houston is the epitome of modern architecture with its magnificent reversed design and eye catching facade. The versatile layout maximises space and useable area and is easily modified to suit any lot size. The first floor is designed to capitalise the views, with a spacious living area and large balcony allowing you to live amongst the tranquil vista. The master bedroom is located to the rear of this level for ease and privacy. Downstairs hosts the remainder of the living zones, with three generous bedrooms, study and a well-appointed alfresco. The Houston represents exceptional value for money.

ROSMOND.
CUSTOM HOMES

suite 5, 108 wanneroo road tuart hill wa 6060
phone: 08 9440 6644
fax: 08 9440 6677
email: info@rosmondhomes.com.au